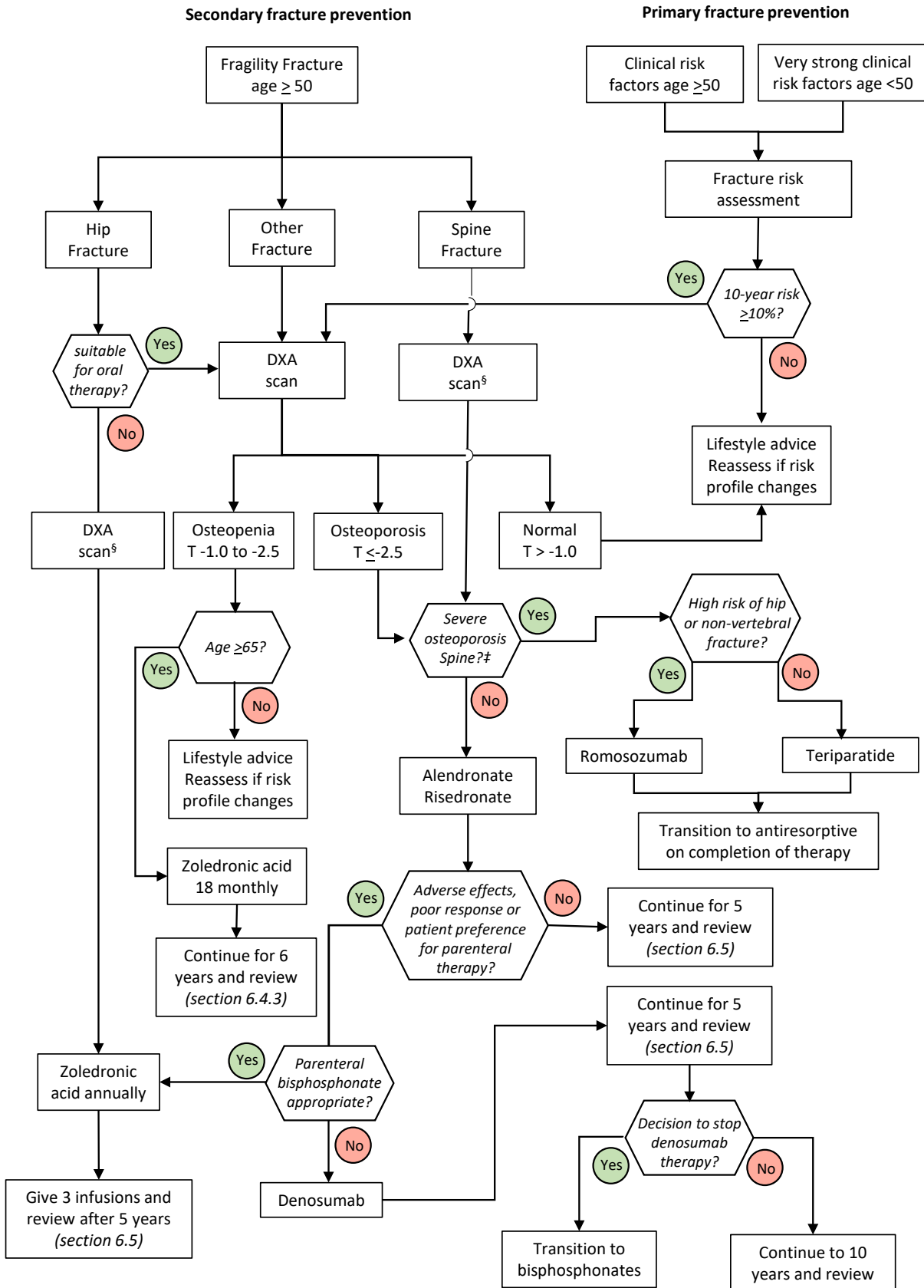


Figure 3: Pathway from risk factors to pharmacological treatment selection in postmenopausal women over the age of 50



<sup>§</sup> DXA scan advisable to obtain baseline BMD but not necessary to initiate treatment; # One severe or two or more moderate vertebral fractures on x-ray, and T-score <-1.5 at any site or spine T score <-4.0