

## Search Flow Chart Template

Systematic Reviews: all KQs

Initial Return = 1512
Sifted results = 153

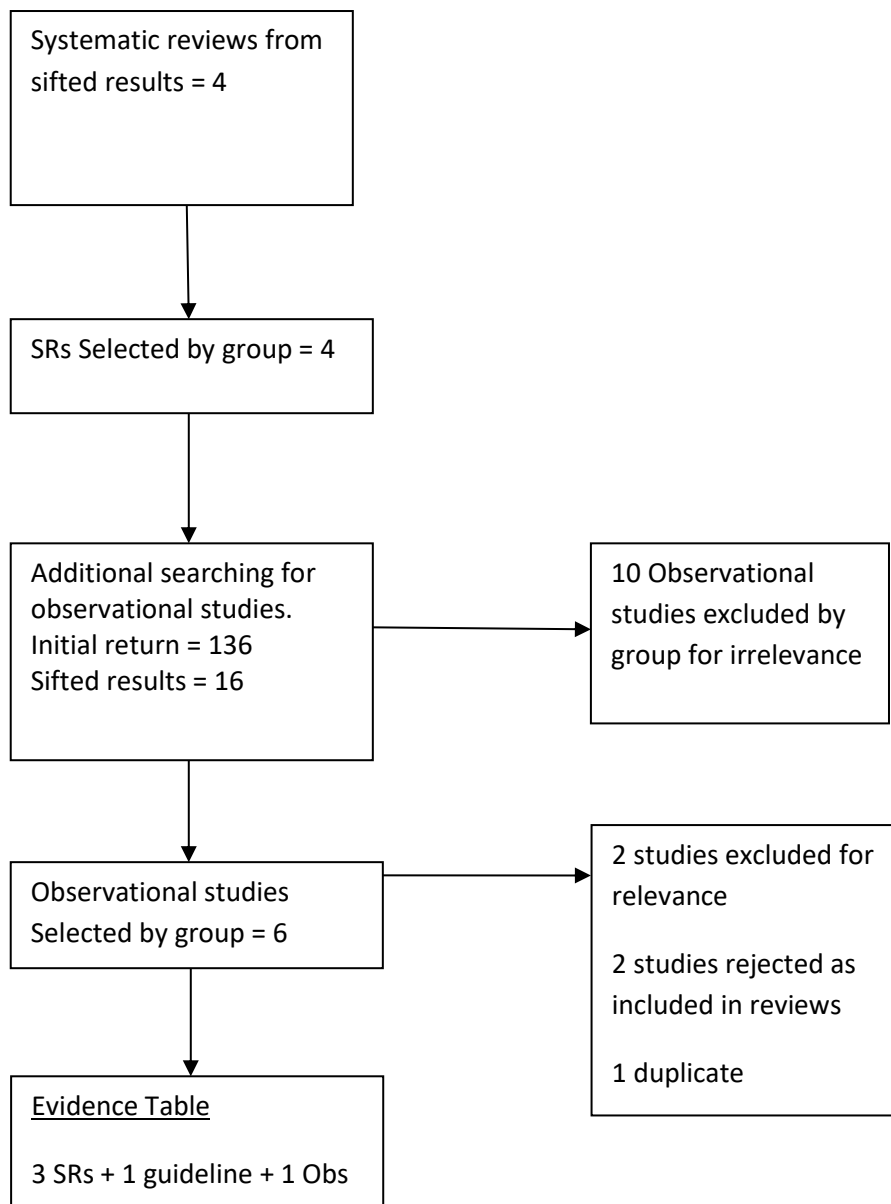
RCTs: KQs 2,4,6

Initial Return = 9065
Sifted results = 121

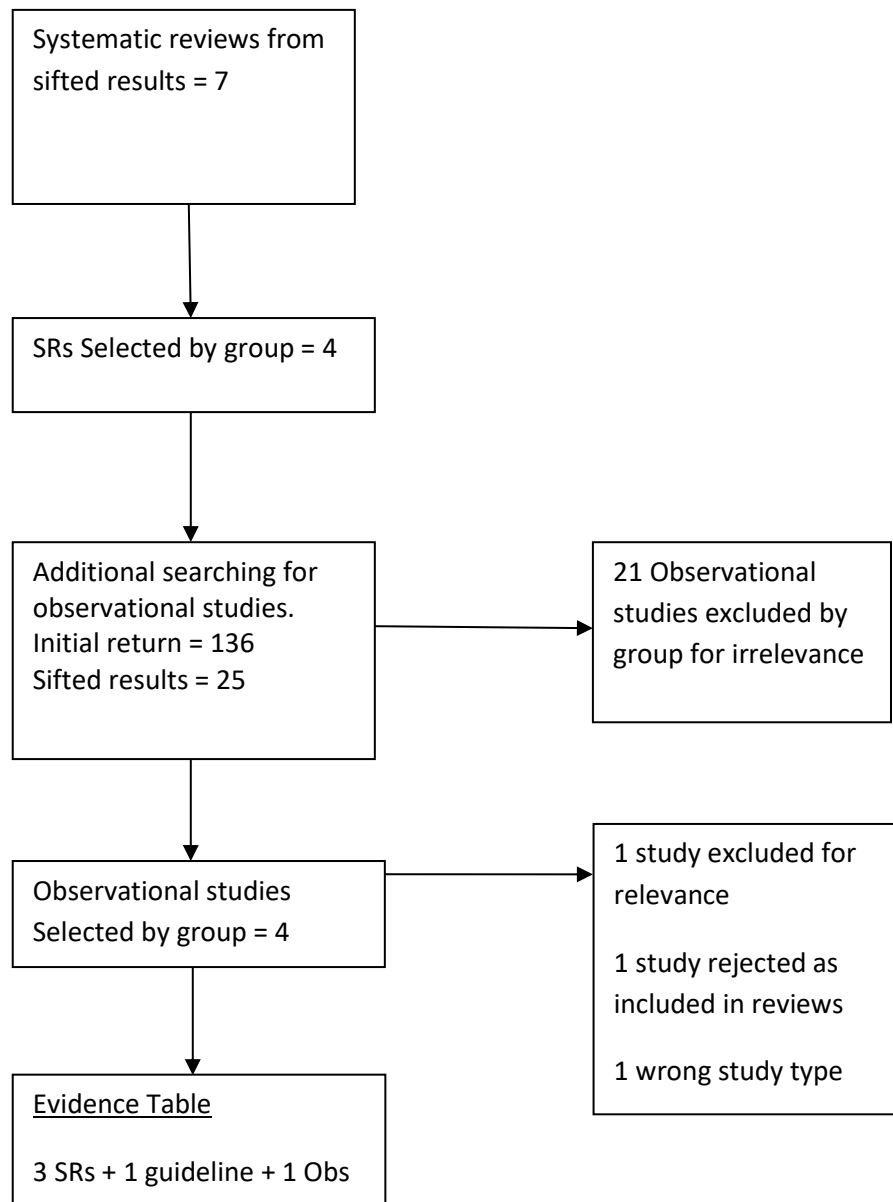
Diagnostic studies: KQs 1,3,5

Initial Return = 3042
Sifted results = 136

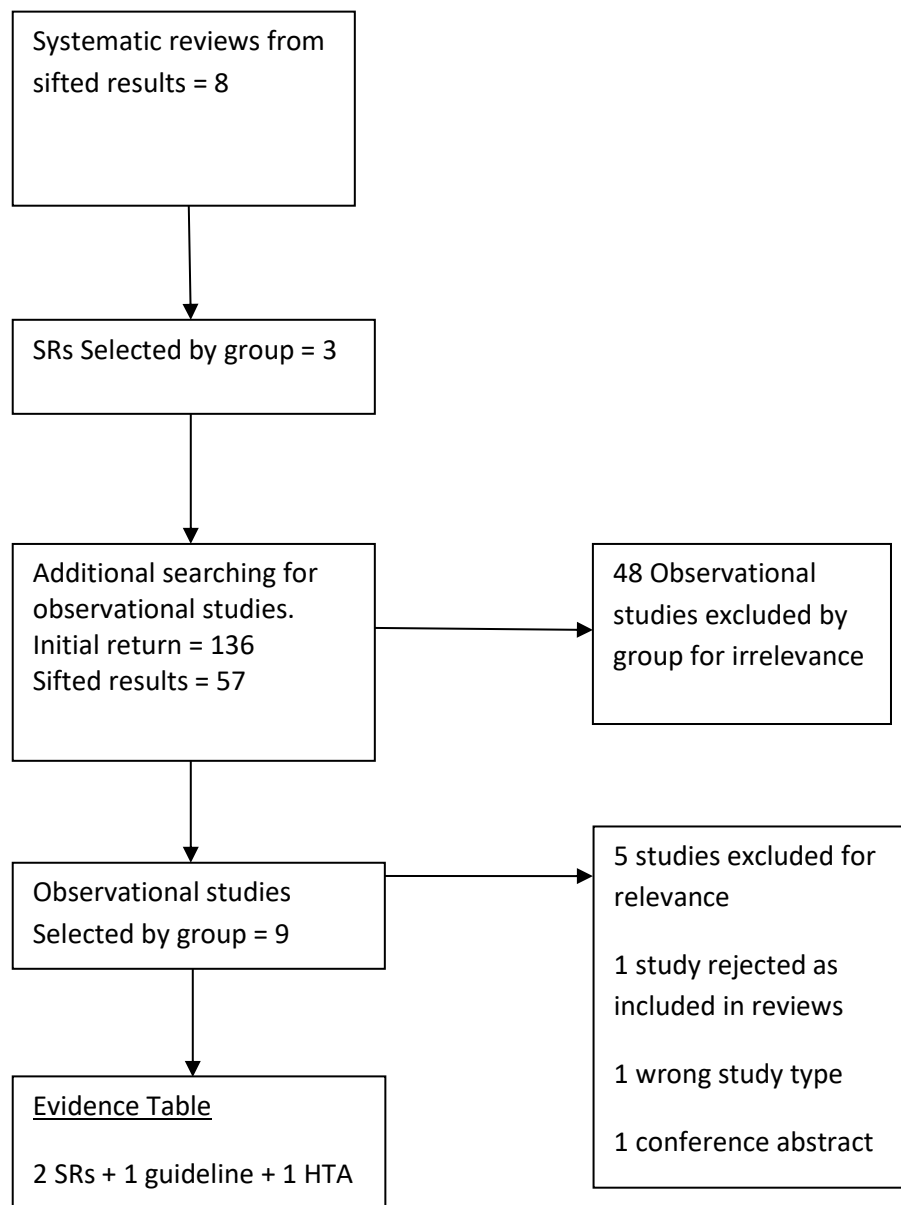
KQ 1a - How should uncomplicated lower UTI be diagnosed in women under 65 years?  
(Clinical assessment)



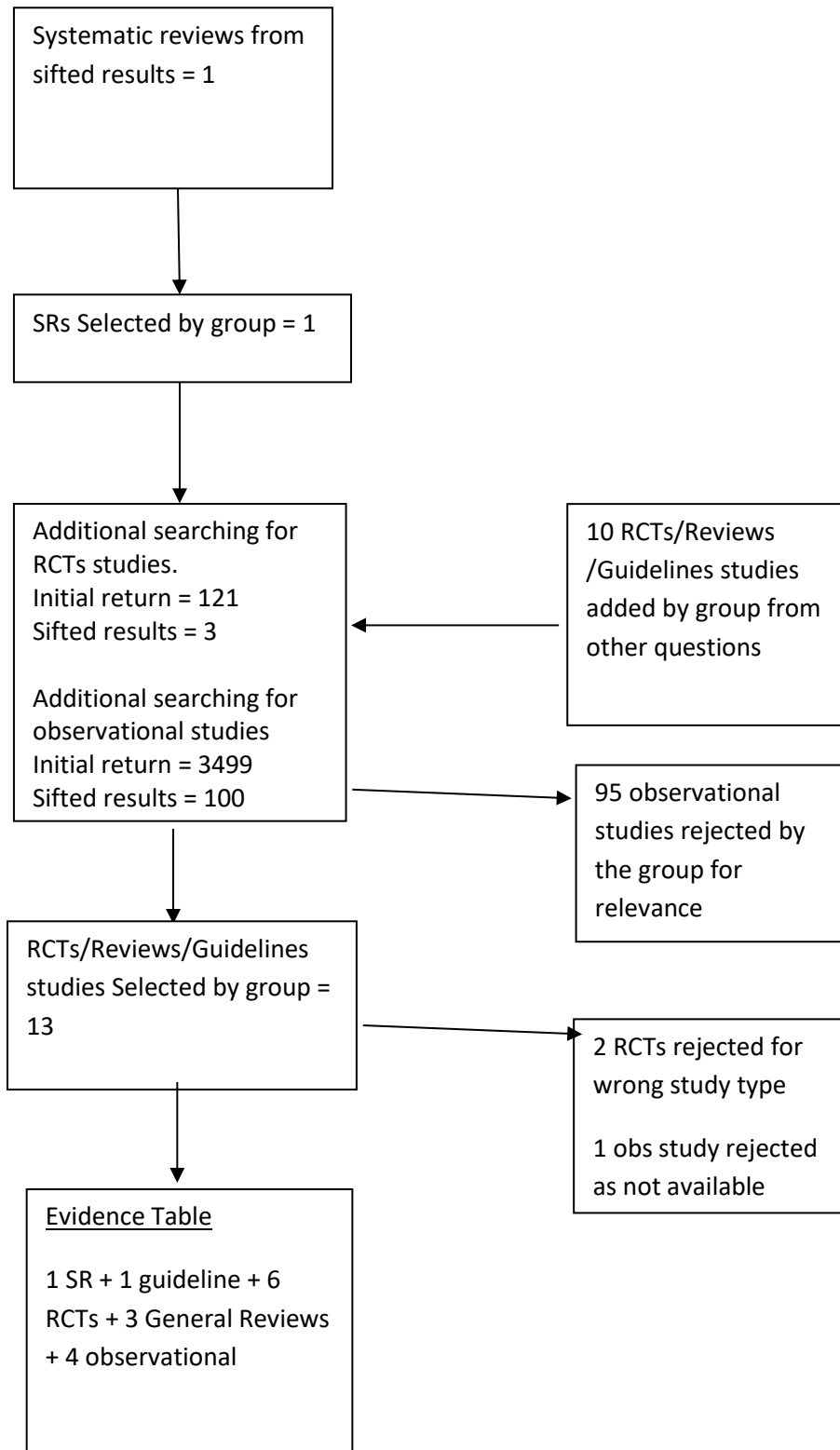
KQ 1b - How should uncomplicated lower UTI be diagnosed in women under 65 years?  
(Urinary symptoms)



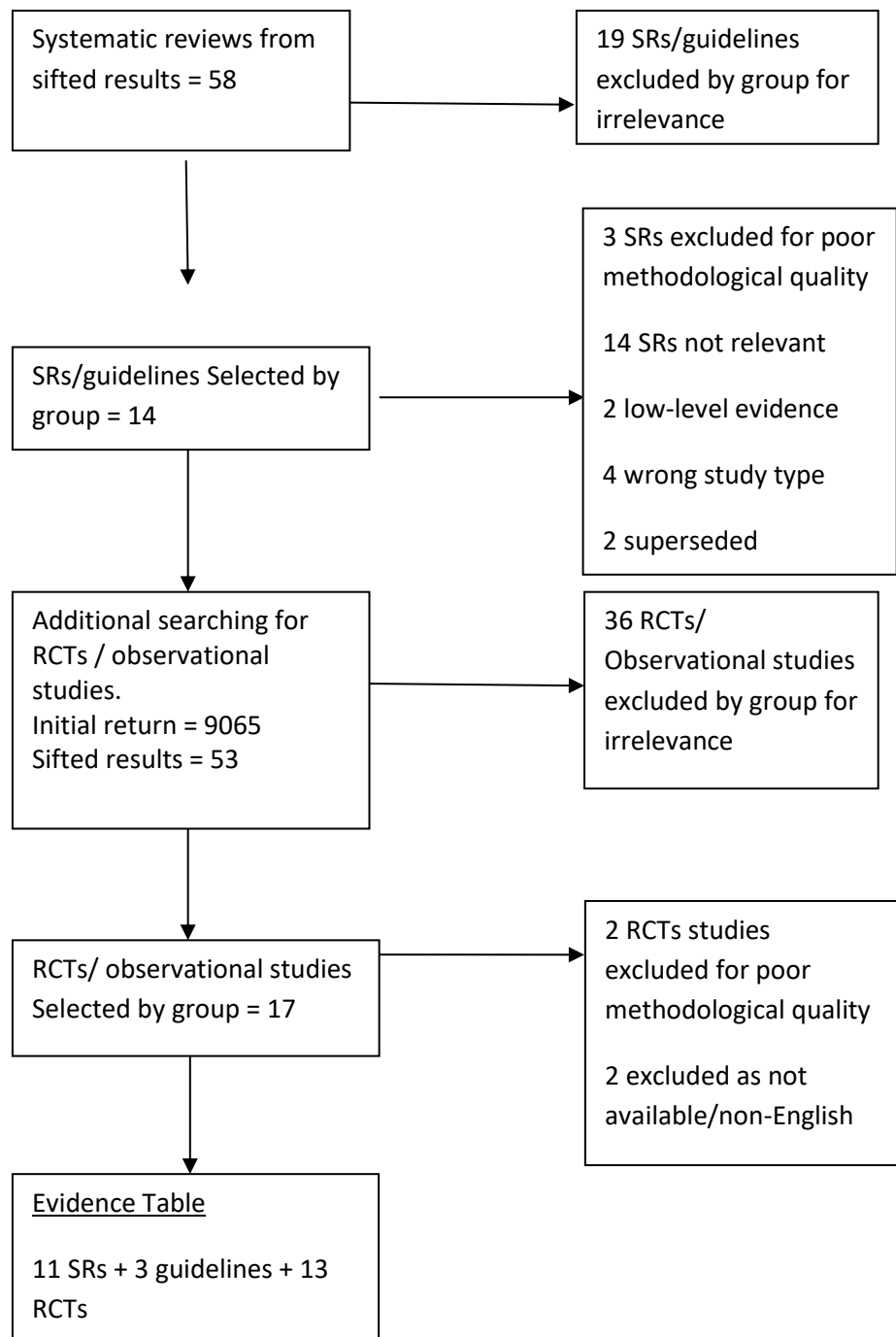
KQ 1c - How should uncomplicated lower UTI be diagnosed in women under 65 years?  
(Dipstick testing)



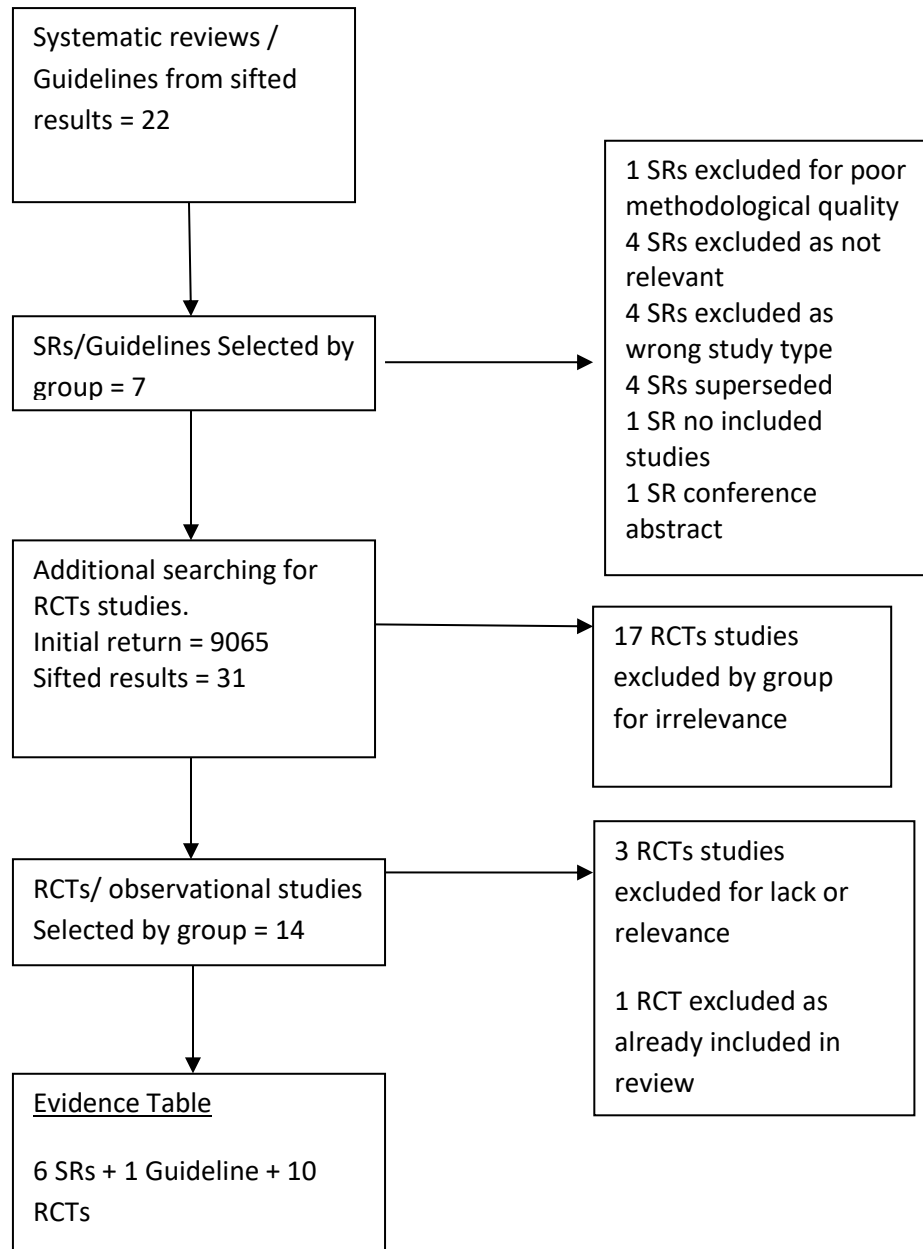
KQ 2a - How should uncomplicated lower UTI be managed in women under 65 years?  
(Self care)



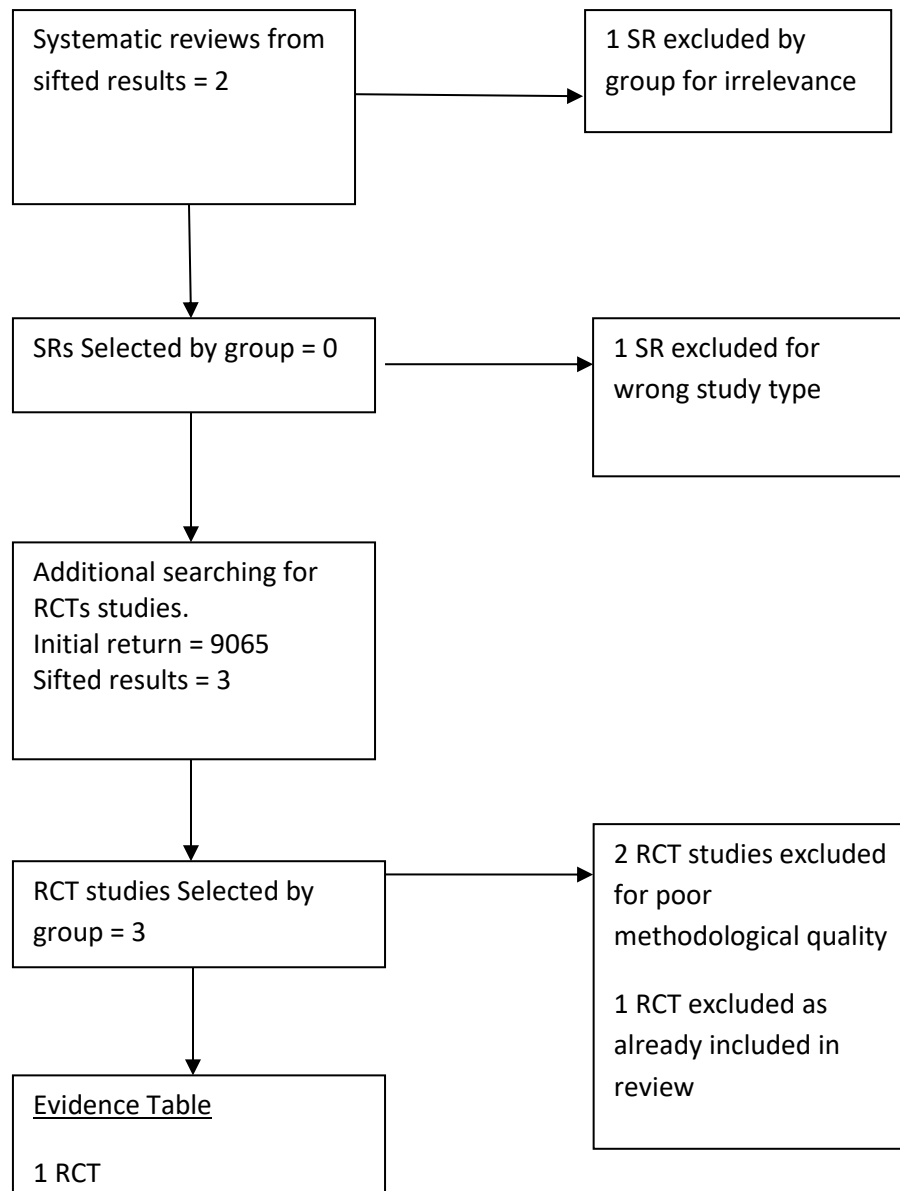
KQ 2b - How should uncomplicated lower UTI be managed in women under 65 years?  
(Antibiotics)



KQ 2c - How should uncomplicated lower UTI be managed in women under 65 years?  
(Non-antibiotics)

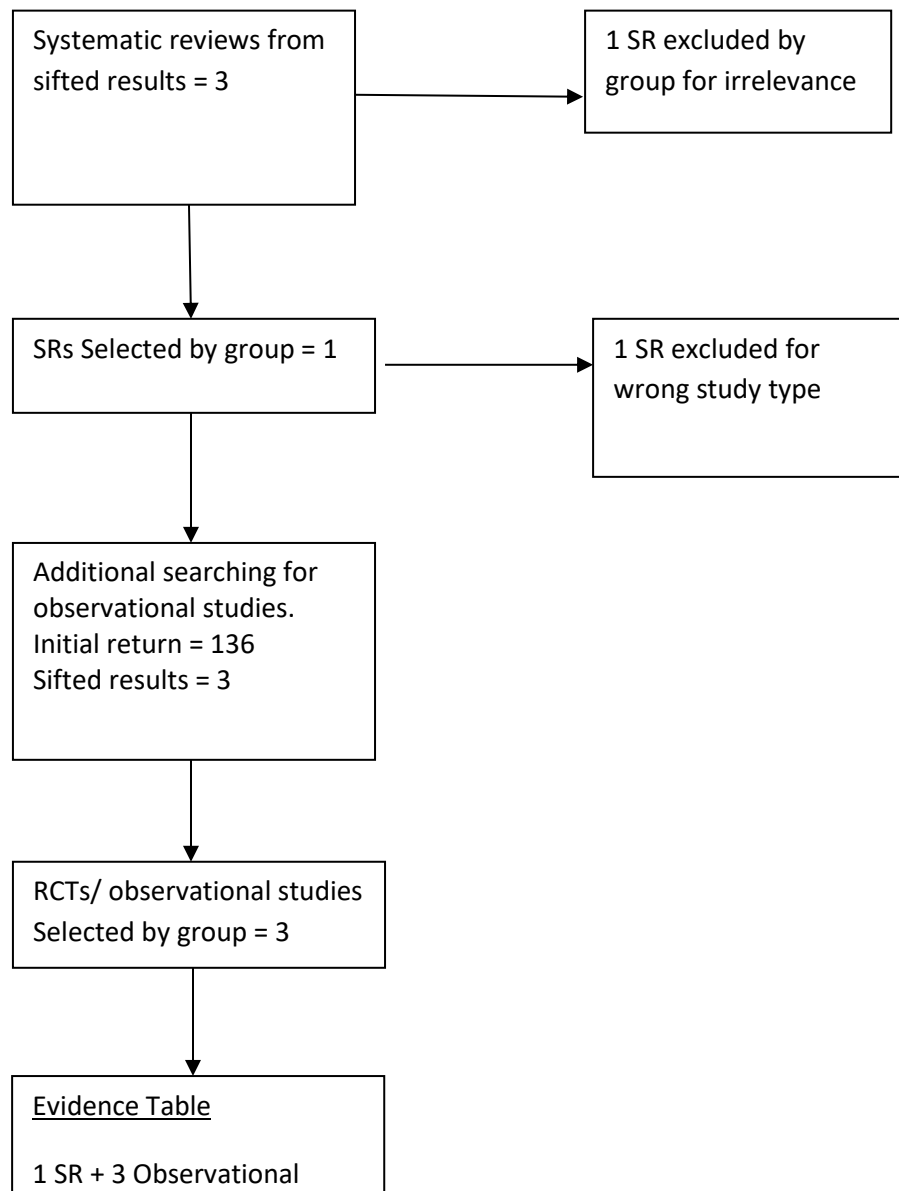


KQ 2d - How should uncomplicated lower UTI be managed in women under 65 years?  
(Delayed treatment)

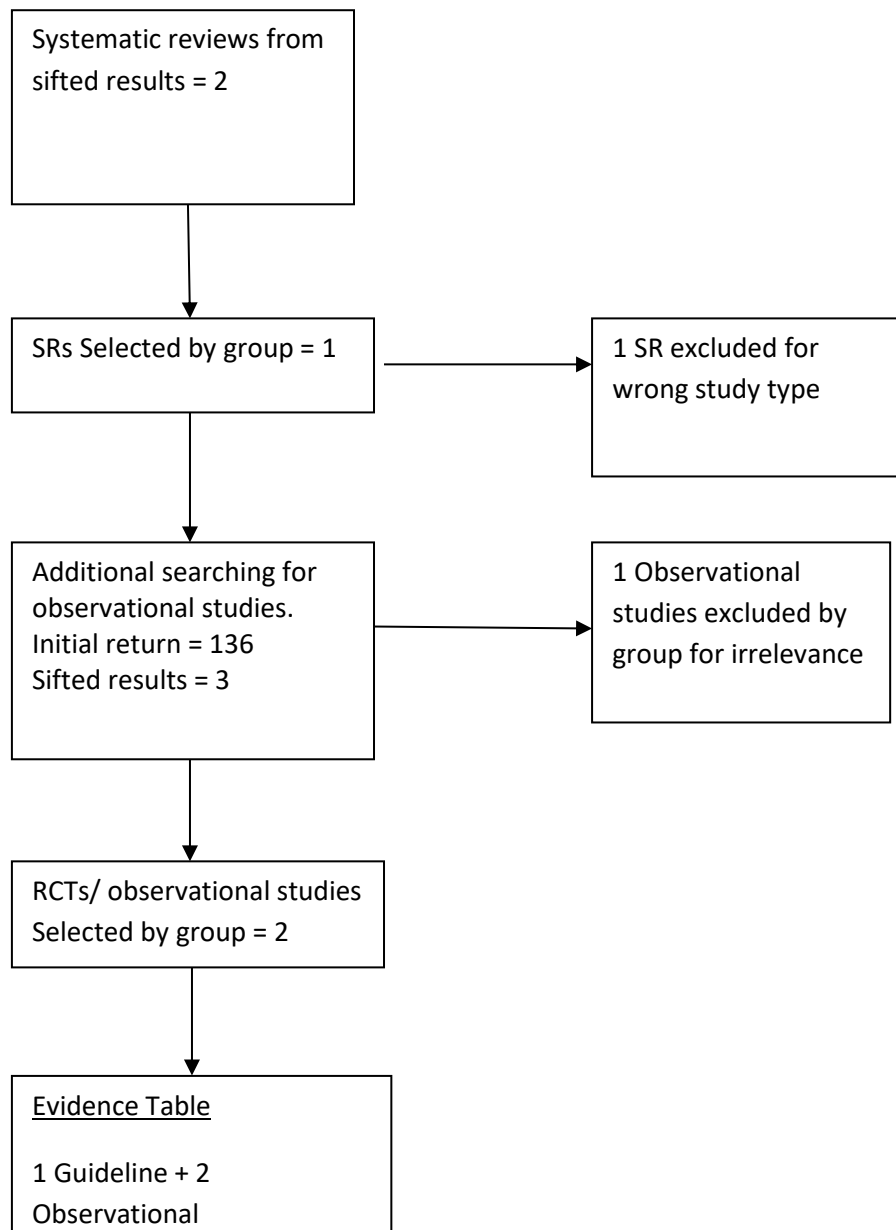




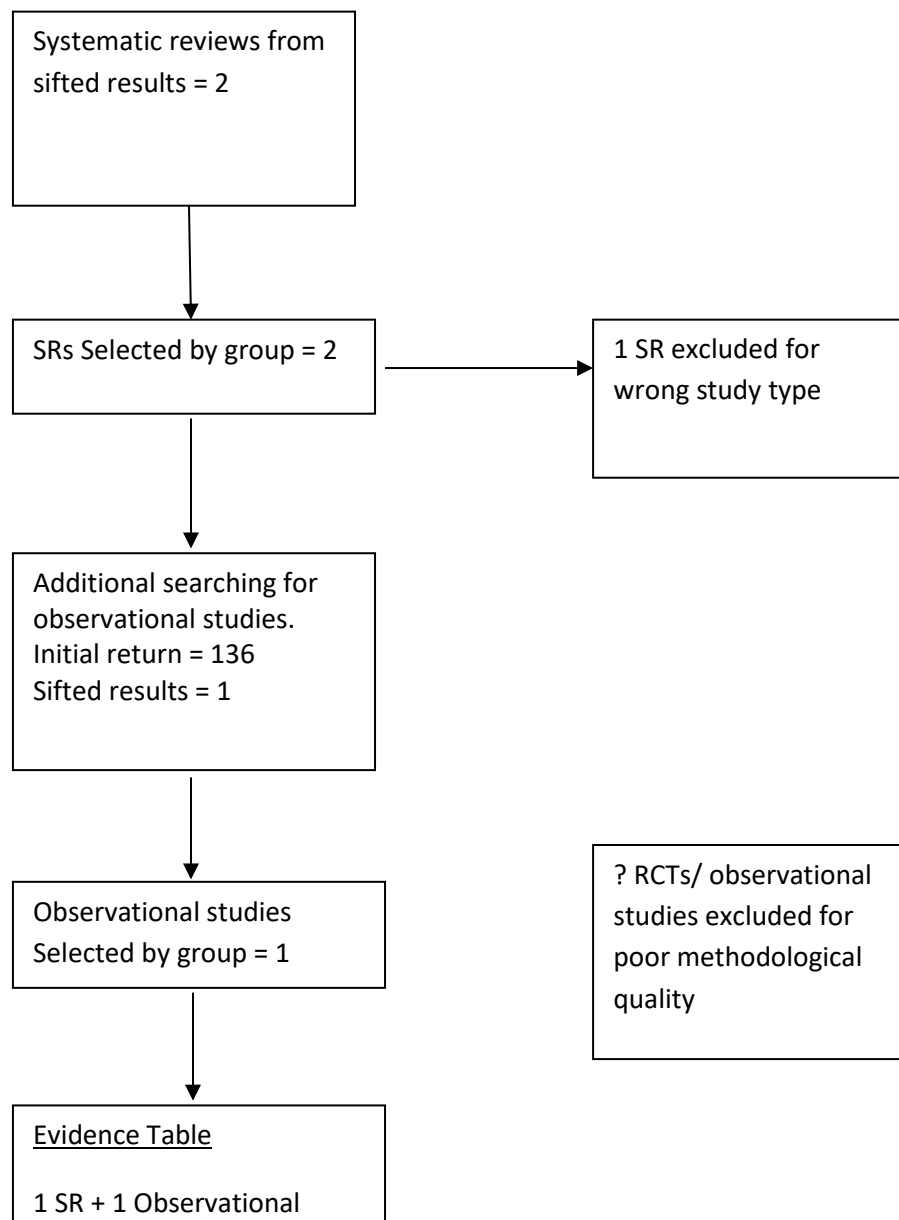
KQ 3a - How should uncomplicated lower UTI be diagnosed in women  $\geq 65$  years?  
(Clinical assessment)



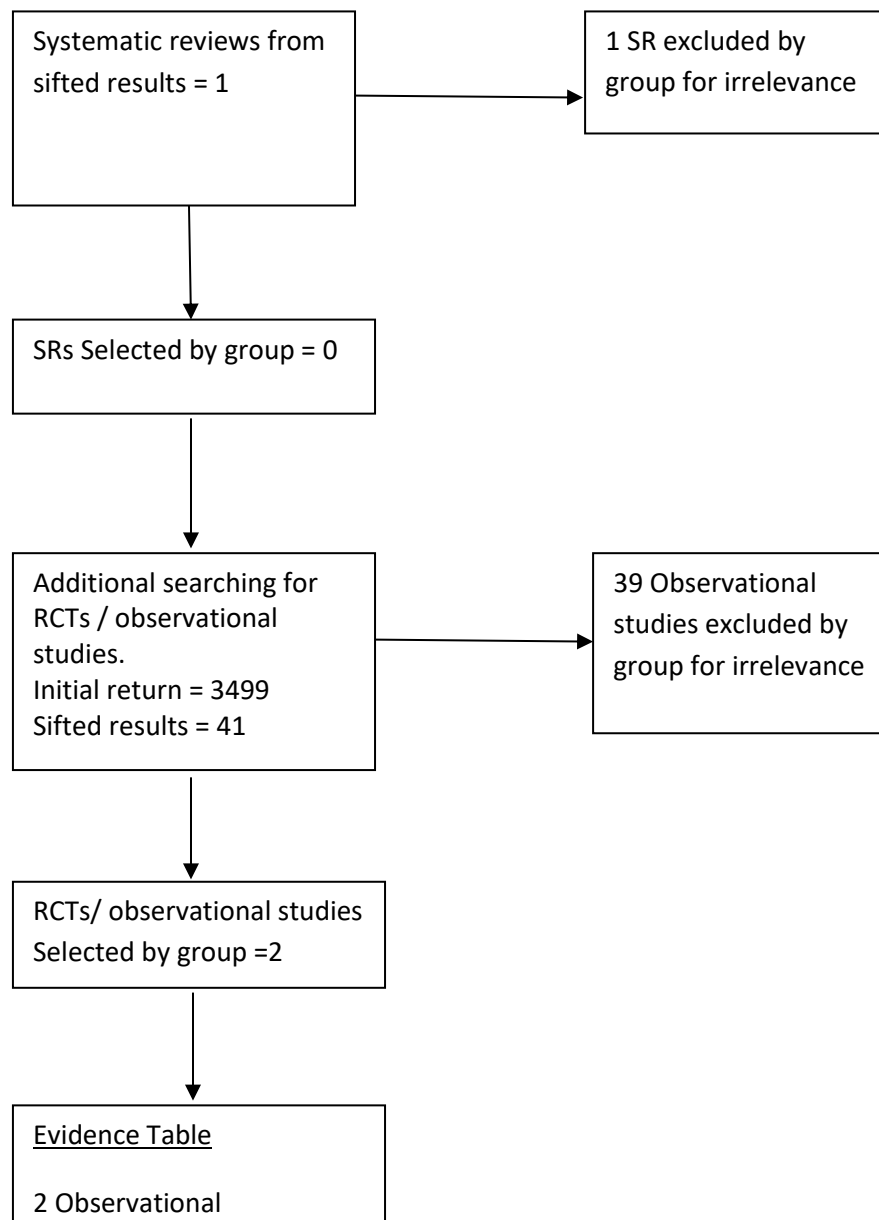
KQ 3b - How should uncomplicated lower UTI be diagnosed in women  $\geq 65$  years?  
(Urinary symptoms)



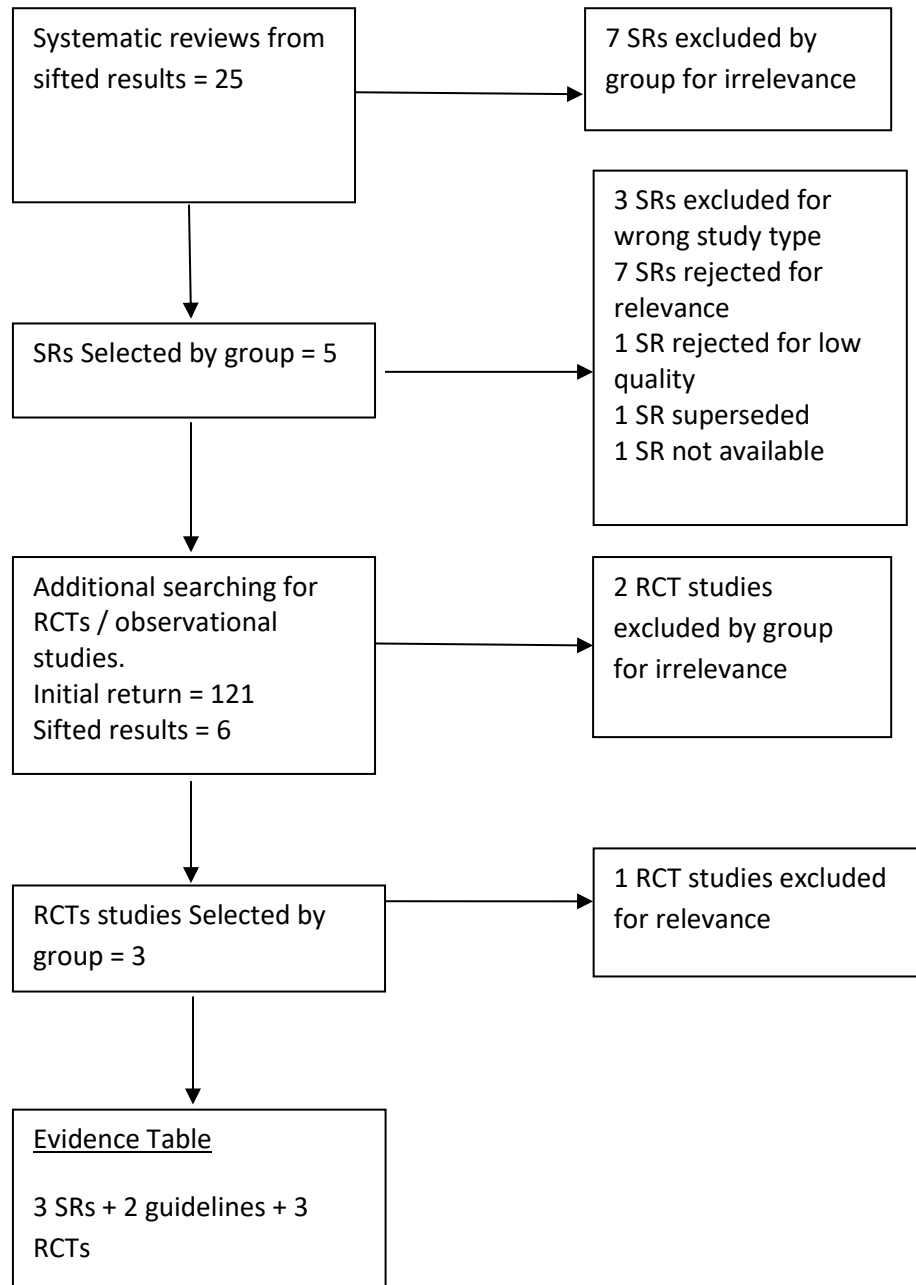
KQ 3c - How should uncomplicated lower UTI be diagnosed in women  $\geq 65$  years?  
(Non-specific symptoms)



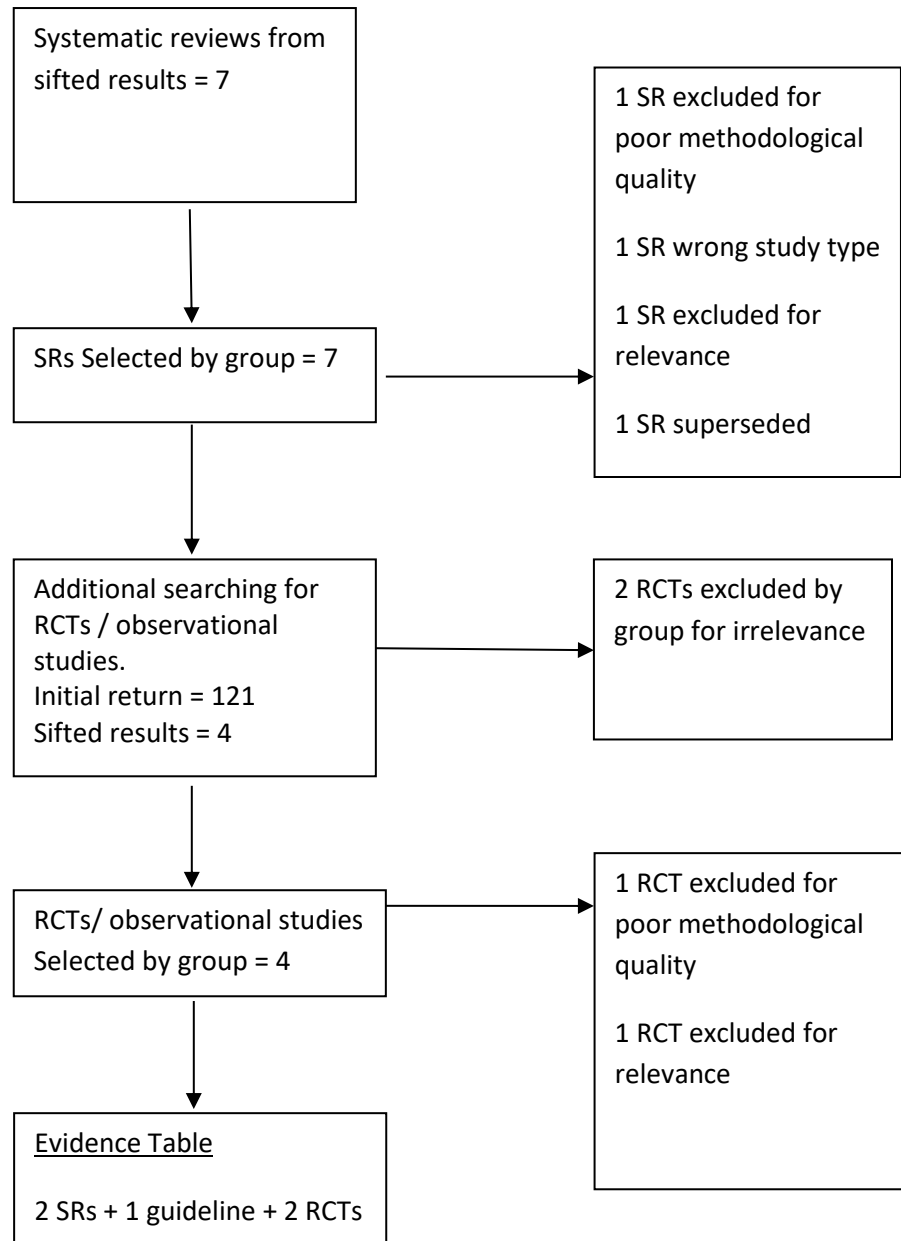
KQ 4a - How should uncomplicated lower UTI be managed in women  $\geq 65$  years?  
(Self care)



KQ 4b - How should uncomplicated lower UTI be managed in women  $\geq 65$  years?  
(Antibiotics)



KQ 4c - How should uncomplicated lower UTI be managed in women  $\geq 65$  years?  
(Non-antibiotics)



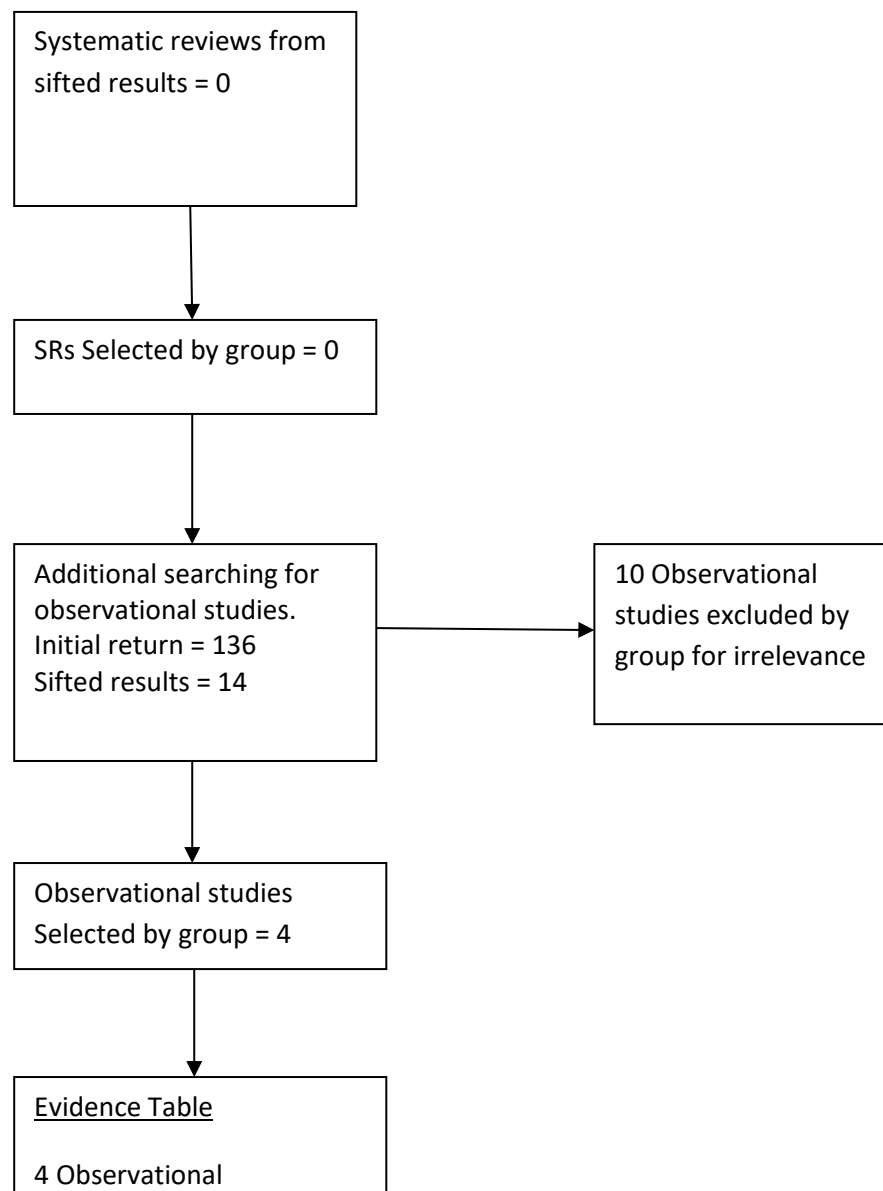
KQ 4d - How should uncomplicated lower UTI be managed in women  $\geq 65$  years?

(Delayed treatment)

No evidence identified

KQ 5a - How should catheter-associated lower UTI be diagnosed in women?

(Clinical assessment)



KQ 5b - How should catheter-associated lower UTI be diagnosed in women?  
(Urinary symptoms)

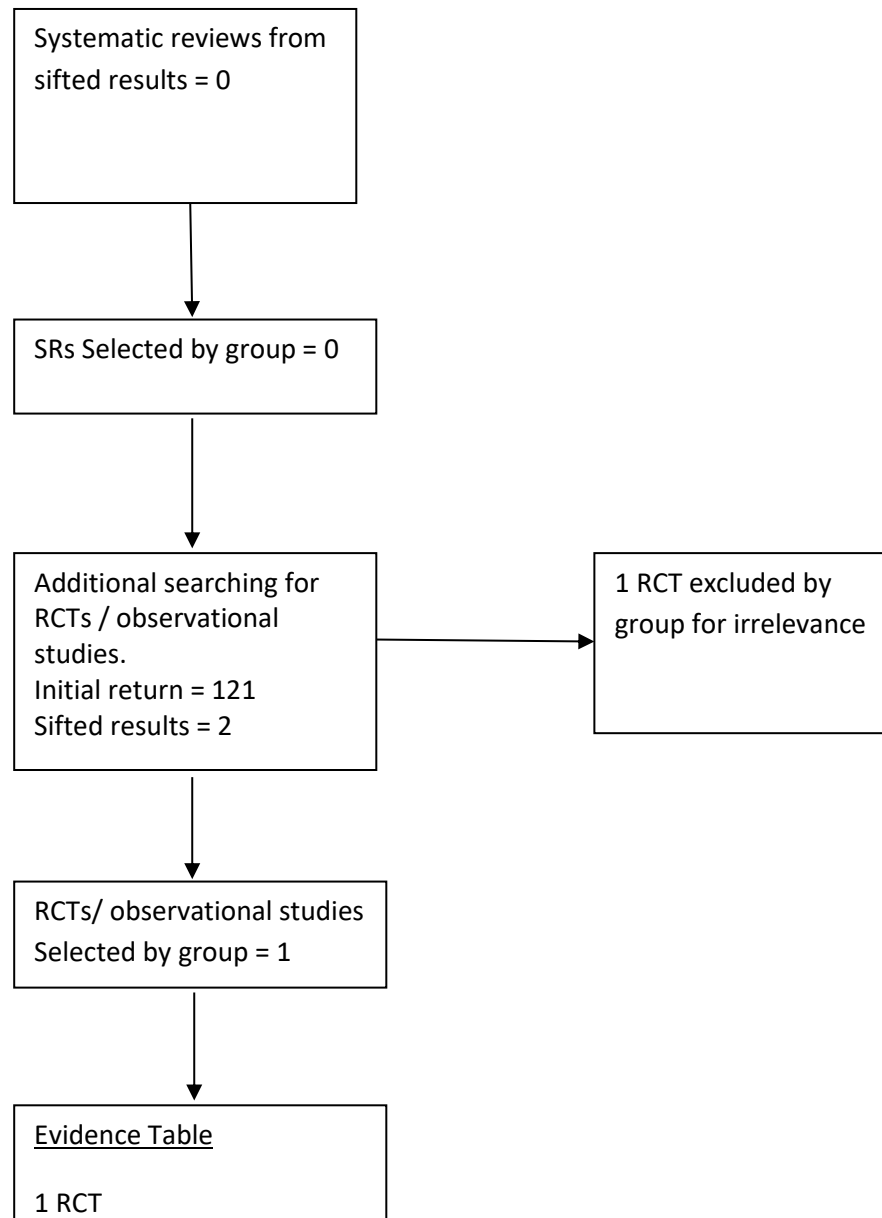
No evidence Identified

KQ 5c - How should catheter-associated lower UTI be diagnosed in women?  
(Non-specific symptoms)

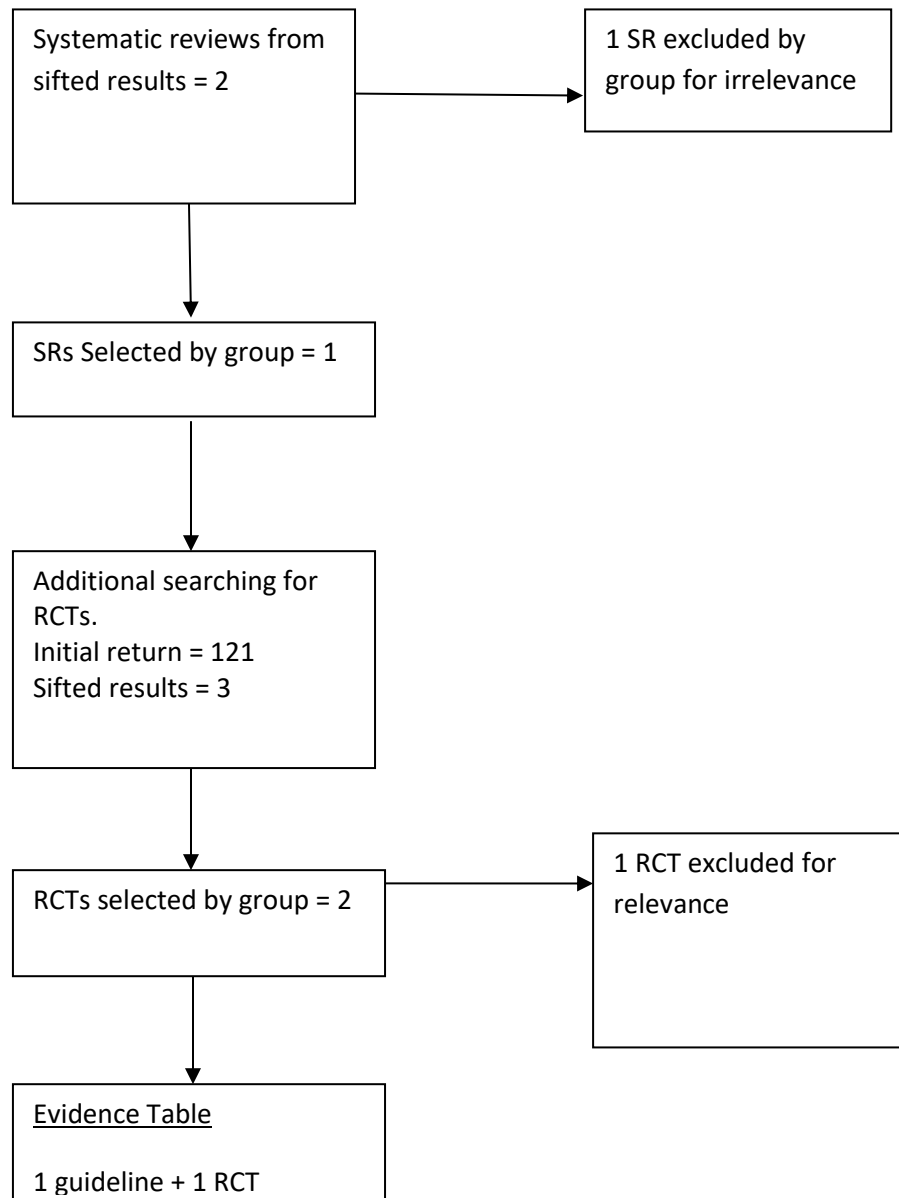
No evidence identified



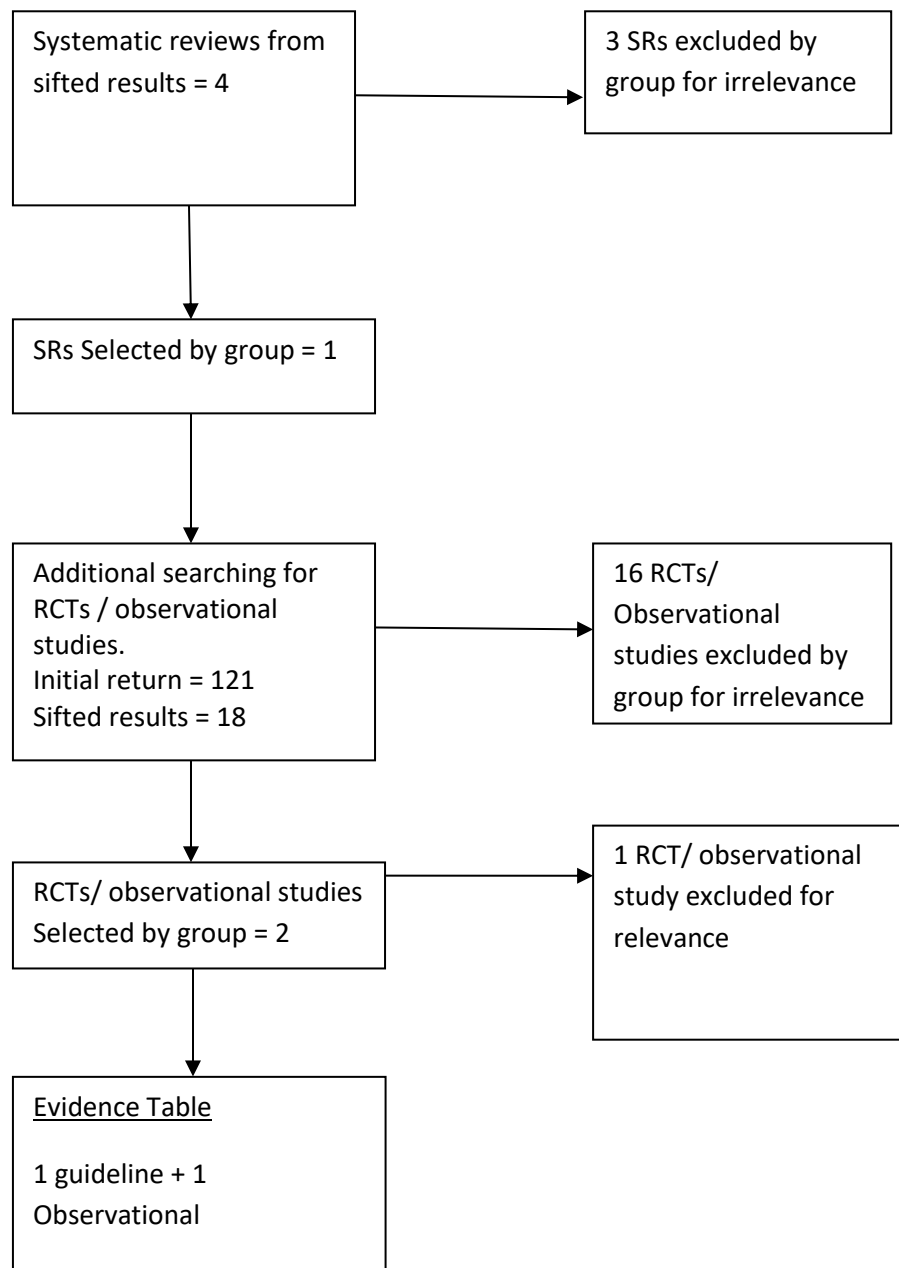
KQ 6a - How should catheter-associated lower UTI be managed in women?  
(Self care)



KQ 6b - How should catheter-associated lower UTI be managed in women?  
(Antibiotics)



KQ 6c - How should catheter-associated lower UTI be managed in women?  
(Non-antibiotics)



KQ 6d - How should catheter-associated lower UTI be managed in women?  
(Delayed treatment)

No evidence identified